

# Panties Pattern

by gracefaerie

Custom sized for Kaye Wiggs' Nelly

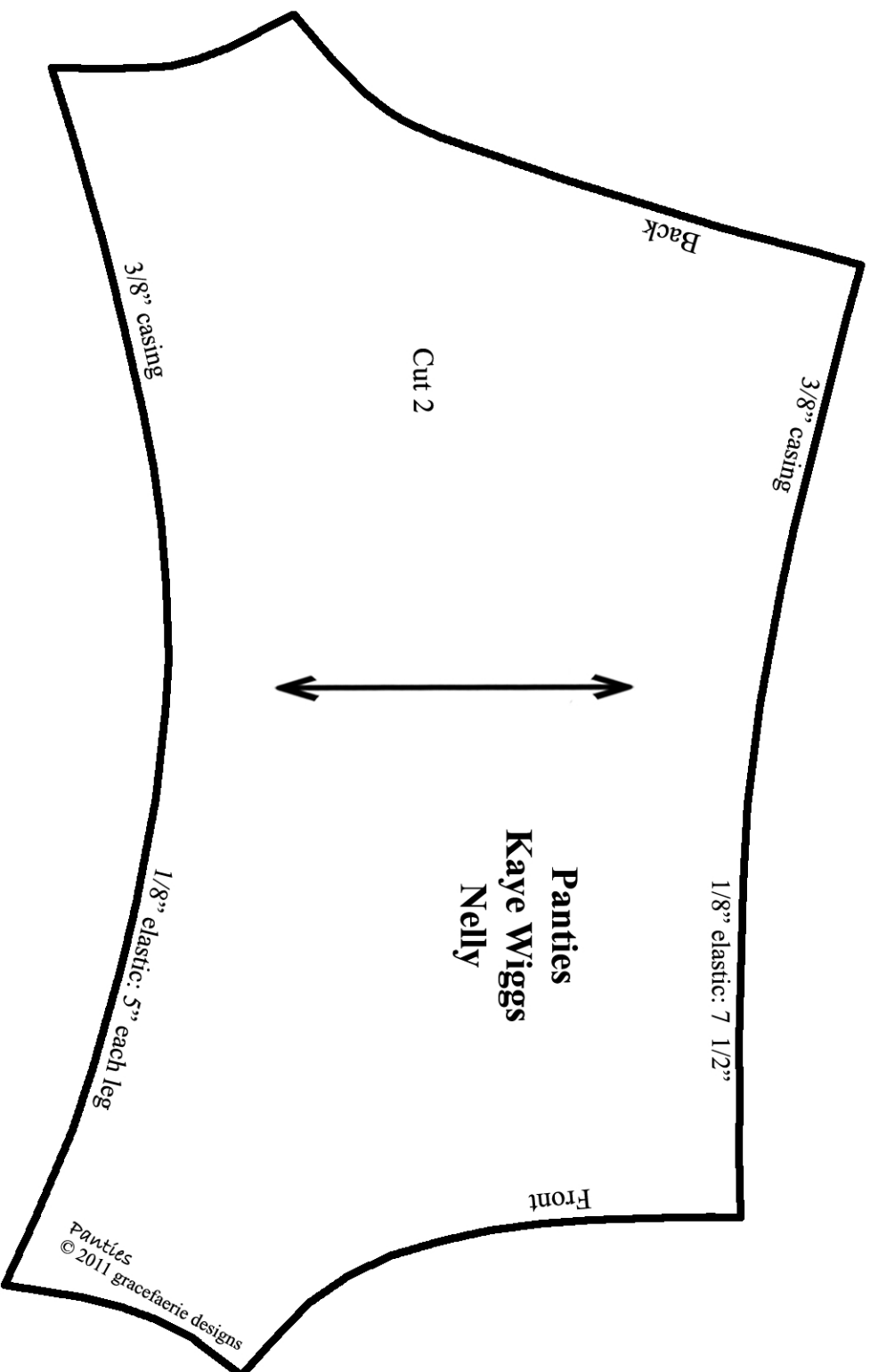
***Seam allowances are already included in the pattern pieces.  
All seam allowances are 1/4" unless otherwise noted.***

*You will need a small piece of woven cotton fabric and a generous 1/2 yard of 1/8" elastic to make these panties.*

1. Cut out the panties.
2. With right sides together, stitch the center front seam. Clip curves and press seam open.
3. Finish the upper edge and leg openings with an overlock stitch.
4. To form the 3/8" casing at the upper edge, turn under 3/8" and press. Make one row of stitches very close to the fold line and another row of stitches 1/4" from the first row of stitches.
5. Thread a piece of 1/8" elastic through the casing and stitch at one end of the casing to secure. Draw up the elastic. The finished length will be 7 1/2". Stitch at the other end of the casing to secure.
6. To form the casing at the lower edge of the leg openings, turn under 3/8" and press. Make one row of stitches very close to the fold line and another row of stitches 1/4" from the first row of stitches.
7. Thread a piece of 1/8" elastic through the casing and stitch at one end of the casing to secure. Draw up the elastic. The finished length will be 5". Stitch at the other end of the casing to secure. Repeat for the other leg opening.
8. With right sides together, stitch the center back seam. Clip curves and press seam open. Make a few stitches at the upper edge to secure the seam allowance in the open position.
9. With right sides together, stitch the inseam, beginning at the hem edge of one leg opening and ending at the hem edge of the other leg opening. Clip curves and press seam open. Turn to the right side and slip on your Nelly.

[www.gracefaerie.com](http://www.gracefaerie.com)





1" marker

Print at 100% on US Letter paper.